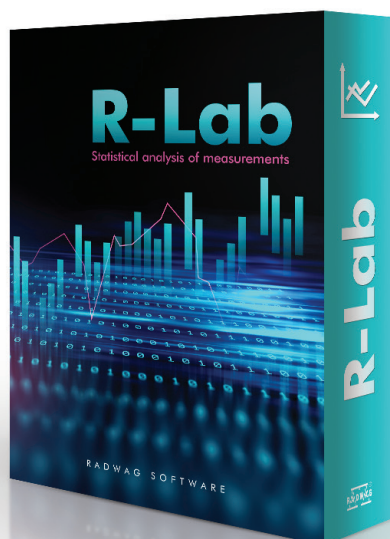


R-Lab

Collecting, presenting and statistical analysis of measurements



R-Lab

Features

Integration with RADWAG Equipment

R-Lab cooperates with MW01, MW04, MWMH modules, weighing instruments and multiplatform modules along with all types of balances operating SI and SS commands. The system automatically detects balances in the network and allows to manually add older types of devices. Up to 20 devices can be connected simultaneously.

Functionality

The software features series of functions required for everyday operation of the weighing instruments such as: preview of multiple scales/modules, support of current mass readout, taring, zeroing, continuous transmission support, measurement series support. Transmitted information is saved to the software database and can be filtered according to specified criteria. Collected data include products, customers, operators, descriptions, lot and batch numbers. R-Lab collects weighings online exclusively.

Results Presentation

Collected information is presented as graphs and in a table as reports.

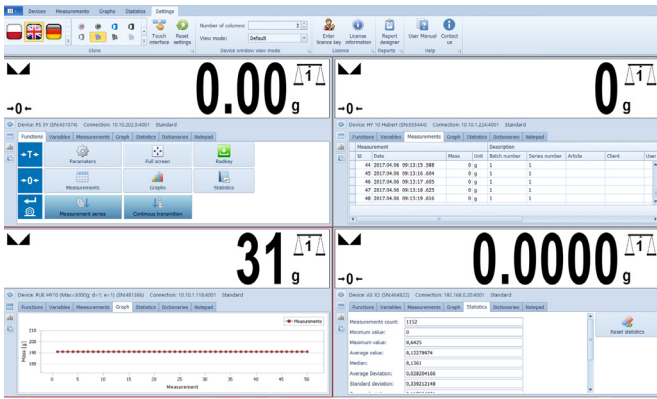
Types of generated graphs:

- Measurements graph with statistics data
 - Gaussian distribution function (probability distribution) and a histogram
 - Stability graph – difference between successive measurements
- All in one graph.

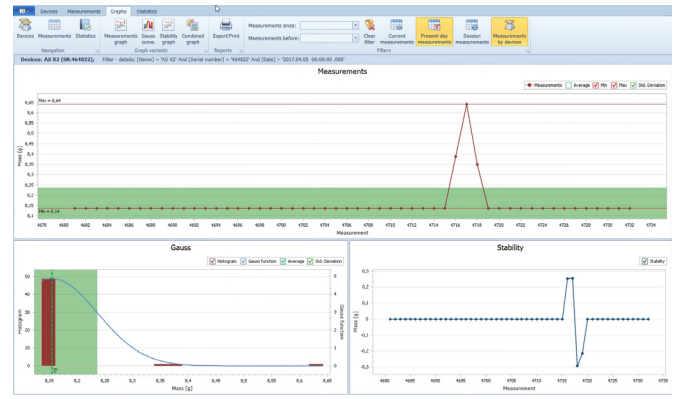
Export and Printouts

Weighings, reports and graphs can be exported to PDF, HTML, MHT, RTF, XLS, XLSC, CSV, text and graphic files.

Screenshots



Interface for 4 weighing devices



Graph in R-Lab

Compatible with

Weighing Instruments:

- 4Y laboratory balances
- 3Y laboratory balances
- X2 laboratory balances
- R laboratory balances
- C32 industrial scales
- WPW industrial scales
- WPT industrial scales
- TMX industrial scales
- WPY/WLY industrial scales
- HX5.EX industrial scales
- HX7 industrial scales
- HY10 industrial scales

Indicators and Terminals

- PUE C315
- PUE C/41H

- PUE C32
- PUE 7.1
- PUE HX5.EX
- PUE HX7
- PUE HY10
- PUE 5

Weighing modules

- MAS and MAS.1
- MPS
- MUYA
- MWSH
- MWMH
- MWLH
- MW-01
- MW-04

Hardware requirements

PC computer

- Operating system: Windows 10 / 8 / 8.1 / 7 (excluding Starter version)
- 2 GHz dual-core processor or faster
- Minimum 2 GB operating memory
- Minimum 3 GB of free space on a hard drive
- 1280x1024 monitor
- DVD drive
- Default system font size: 96 dpi