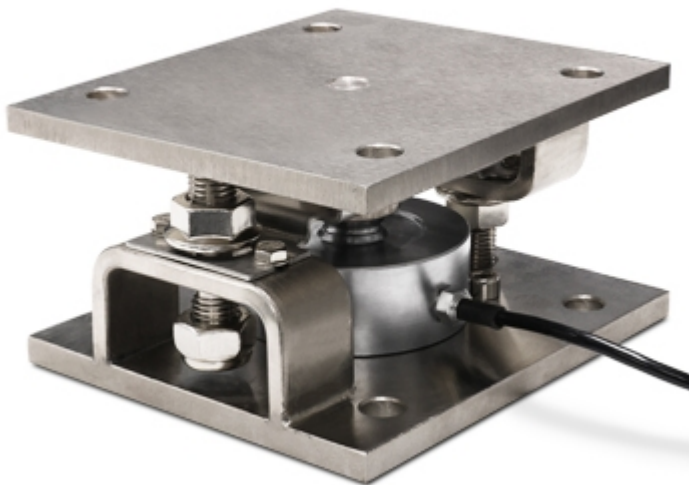


KCPNA

Kits in nickel-plated steel "KCPNA" series, for CPX compression load cells



Installation kit for compression load cells series CP/CPX up to 12.500kg, suitable for silos, tanks and hoppers weighing

ADVANTAGES:

- Self-centering connection segment between lower and upper plates
- Protection against electrostatic charges
- Anti-overtum system.
- Blocking system for an easy maintainant and a safe shipment

Working in cooperation with:

AHNE TECH STAFF
-- MUSCAT
alhinaoman@gmail.com

**The best solution
for advanced industrial
applications**

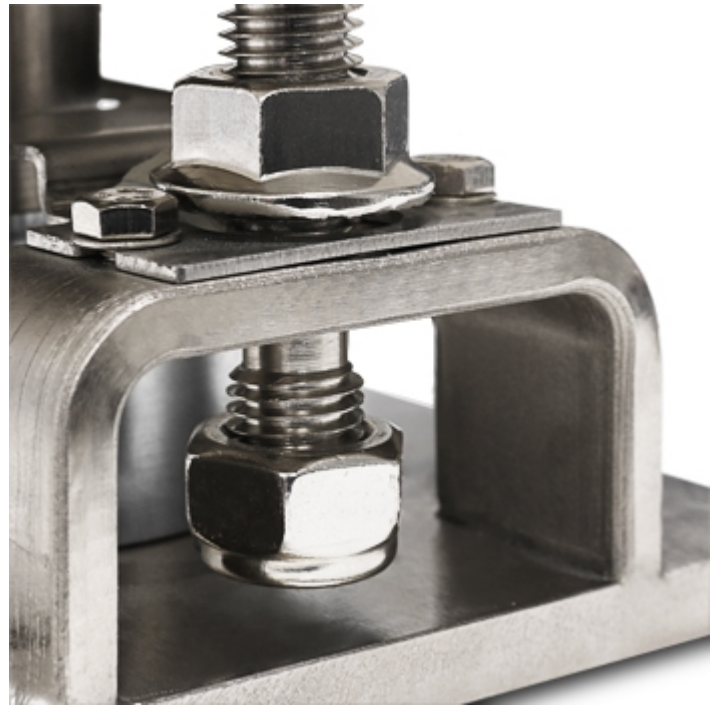
MAIN FEATURES

- NICKEL-PLATED STEEL BODY.
 - GREAT RESISTANCE TO LATERAL FORCES.
 - NUTS FOR MAINTAINING THE RAISED POSITION, FOR EASY INSTALLATION AND/OR SUBSTITUTION OF THE LOAD CELL.
 - LIMIT-SWITCH NUTS FOR PROTECTION OF THE LOAD CELLS IN CASE OF OVERLOAD.
 - SELF-CENTERING CONNECTION SEGMENT BETWEEN LOWER AND UPPER PLATES.
 - DUMMY LOAD CELLS FUNCTIONING FOR THE WEIGHING OF LIQUIDS.
- The KCPNA kit is designed to allow the correct functioning of the cells and the requested weighing accuracy, within the limits described into the technical manual.

DETAIL 1



DETAIL 2



DETAIL 3





www.diniargeo.com

“YOUR WORLDWIDE PARTNER FOR WEIGHING,”

DINI ARGEO
FRANCE sarl
France

DINI ARGEO
GMBH
Germany

DINI ARGEO
UK Ltd
United Kingdom

DINI ARGEO WEIGHING
INSTRUMENTS Ltd
China

DINI ARGEO
OCEANIA
Australia



COMPANY HEADQUARTERS

Via Della Fisica, 20
41042 Spezzano di Fiorano - Modena - Italy
Tel. +39.0536 843418

AHNE TECH STAFF

-- MUSCAT

alhinaoman@gmail.com

SALES AND TECHNICAL ASSISTANCE SERVICE

All the specifications and images can be subject to variations and upgrades without prior notice.