

## KSBN

Assembly kits in nickel-plated steel "KSBN" series for SBX/SBK shear beam load cells



Assembly kits for shear beam load cells SBX/SBK series up to 2500kg, suitable for hoppers, tanks, platforms, etc.

**ADVANTAGES:**

- Structure in nickel-plated steel.
- Easy and fast assembly.
- Upper plate with spherical joint for excellent measuring accuracy.
- Height adjustment for a correct leveling.

Working in cooperation with:

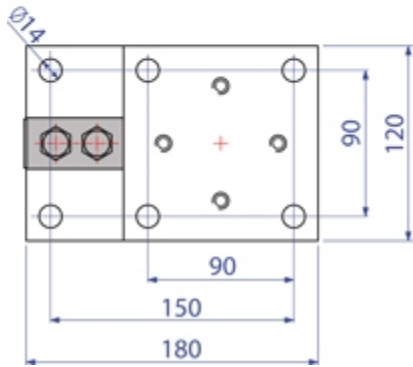
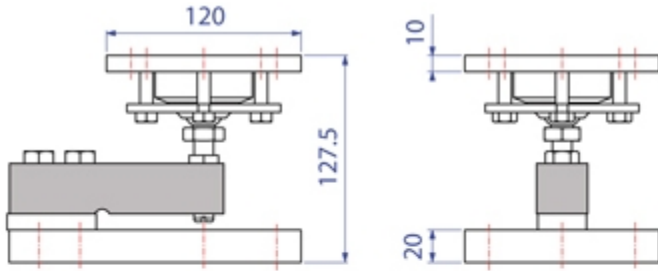
*AHNE TECH STAFF*  
-- MUSCAT  
[alhinaoman@gmail.com](mailto:alhinaoman@gmail.com)

**The best solution  
for advanced industrial  
applications**

## MAIN FEATURES

- MANUFACTURED IN GALVANIZED STEEL
- OSCILLATING SPHERICAL JOINT
- MECHANICAL COMPENSATION OF THERMAL SWELLINGS AND TRANSVERSAL FORCES
- EASY TO INSTALL
- GUARANTEES THE MAXIMUM PRECISION OF THE LOAD CELL.

## DETAIL 1



Dimensions in mm



www.diniargeo.com

“YOUR WORLDWIDE PARTNER FOR WEIGHING,”

DINI ARGEO  
FRANCE sarl  
France

DINI ARGEO  
GMBH  
Germany

DINI ARGEO  
UK Ltd  
United Kingdom

DINI ARGEO WEIGHING  
INSTRUMENTS Ltd  
China

DINI ARGEO  
OCEANIA  
Australia



**COMPANY HEADQUARTERS**

Via Della Fisica, 20  
41042 Spezzano di Fiorano - Modena - Italy  
Tel. +39.0536 843418

**AHNE TECH STAFF**

-- MUSCAT

alhinaoman@gmail.com

SALES AND TECHNICAL ASSISTANCE SERVICE

All the specifications and images can be subject to variations and upgrades without prior notice.